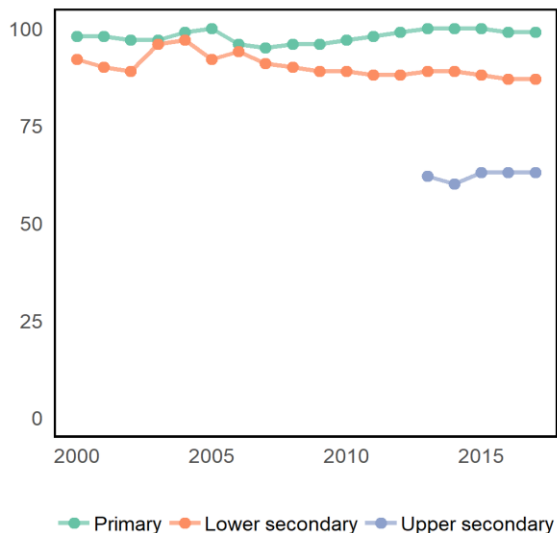


Eastern and South-eastern Asia

# Malaysia

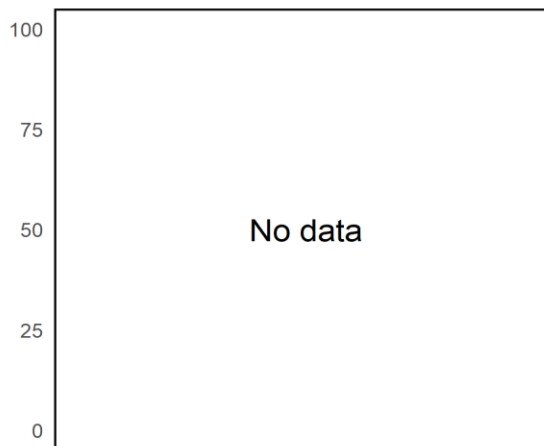
	Population (millions)	Students (millions)
Primary	3 <sub>+1</sub>	3
Secondary	3 <sub>+1</sub>	3

Adjusted net enrolment rate



Source: UIS database.

Completion rate



Source: UIS database and GEM Report team analysis.

## INDICATORS BY SDG 4 TARGET (%)

	National	Regional	Global
Target 4.1 Basic education - Participation			
Out-of-school rate, primary	1	4 <sub>i</sub>	9 <sub>i</sub>
Overage rate, primary	-	5 <sub>i</sub>	9 <sub>i</sub>
Completion rate, primary	...	95	85
Out-of-school rate, lower secondary	12	9 <sub>i</sub>	16 <sub>i</sub>
Overage rate, lower secondary	-	10 <sub>i</sub>	11 <sub>i</sub>
Completion rate, lower secondary	...	79	73
Out-of-school rate, upper secondary	37	19 <sub>i</sub>	36 <sub>i</sub>
Completion rate, upper secondary	...	58	49
Transition rate into secondary	85	90 <sub>i</sub>	76 <sub>i</sub>

	Reading	Maths
Target 4.1 Basic education - Learning		
With minimum proficiency, early grades	86	71
With minimum proficiency, end primary	88	47
With minimum proficiency, end lower secondary	73	42
National assessment, early grades	Yes	Yes
National assessment, end primary	Yes	Yes
National assessment, end lower secondary	Yes	Yes

	National	Regional	Global
<b>Target 4.2 Early childhood</b>			
Pre-primary gross enrolment ratio	97	81	50 <sub>i</sub>
Participation rate, year before primary	99 <sub>-2</sub>	87 <sub>i</sub>	69 <sub>i</sub>
<b>Target 4.3 TVET and tertiary education</b>			
Youth participation rate in TVET	6	2 <sub>i</sub>	4 <sub>i</sub>
Tertiary gross enrolment ratio	42	46	38 <sub>i</sub>
<b>Target 4.4 Skills for work</b>			
Adults who can copy and paste	79	...	...
Adults with secondary education	58 <sub>-1</sub>	...	...
<b>Target 4.6 Adult literacy and numeracy</b>			
Youth literacy rate	...	99 <sub>-1</sub>	91 <sub>-1</sub>
Adult literacy rate	...	96 <sub>-1</sub>	86 <sub>-1</sub>

	National	Regional	Global
<b>Target 4.7 Sustainable development / global citizenship</b>			
With minimum proficiency, science	66 <sub>-2</sub>	...	...
<b>Target 4.a Learning environments</b>			
Primary schools with water	100 <sub>-1i</sub>	100 <sub>i</sub>	88 <sub>i</sub>
<b>Target 4.b Scholarships</b>			
Outbound student mobility rate	5 <sub>i</sub>	3	6
<b>Target 4.c Teachers</b>			
Trained teachers, primary	99	99	92 <sub>i</sub>
Trained teachers, secondary	95	97 <sub>i</sub>	87 <sub>i</sub>
<b>Finance</b>			
Education expenditure (%GDP)	4.8 <sub>-1</sub>	3.4	4.4
Education expenditure (%budget)	20.7 <sub>-1</sub>	13.5	14.1

	National	Regional	Global
<b>Target 4.5 Equity - gender, completion rate</b>			
Female/male parity, primary	...	1.02 <sub>i</sub>	1.01 <sub>i</sub>
Poor females (%), primary	...	86 <sub>i</sub>	76 <sub>i</sub>
Female/male parity, lower secondary	...	1.08 <sub>i</sub>	1.00 <sub>i</sub>
Poor females (%), lower secondary	...	60 <sub>i</sub>	72 <sub>i</sub>
Female/male parity, upper secondary	...	1.15 <sub>i</sub>	1.03 <sub>i</sub>
Poor females (%), upper secondary	...	29 <sub>i</sub>	33 <sub>i</sub>

	National	Regional	Global
<b>Target 4.5 Equity - location and wealth, completion rate</b>			
Rural/urban parity, primary	...	0.96 <sub>i</sub>	0.88 <sub>i</sub>
Poor/rich parity, primary	...	0.81 <sub>i</sub>	0.76 <sub>i</sub>
Rural/urban parity, lower secondary	...	0.81 <sub>i</sub>	0.86 <sub>i</sub>
Poor/rich parity, lower secondary	...	0.52 <sub>i</sub>	0.72 <sub>i</sub>
Rural/urban parity, upper secondary	...	0.58 <sub>i</sub>	0.68 <sub>i</sub>
Poor/rich parity, upper secondary	...	0.24 <sub>i</sub>	0.37 <sub>i</sub>

Notes: (i) estimated value/UIS calculation; (-x): Difference between the observation from the reference year (2017). Indicator definitions are available at the UNESCO Institute for Statistics website and the 2019 Global Education Monitoring Report (Glossary and Introduction to the statistical tables). Data refer to 2017 or the most recently available year unless indicated otherwise.

Sources: UIS database for all indicators except those on targets 4.7 (TIMSS and PISA surveys of secondary students), and target 4.a (UNICEF). Regional aggregates are calculated by either UIS or the GEM Report Team (see above).

## MIGRATION AND EDUCATION

	National	Regional	Global
High skill emigration rate, 1990	26.3	12.6	10.7
High skill emigration rate, 2010	6.0	6.0	10.1
Urban growth rate (2010-2015)	2.7	2.1	1.8

	National	Regional	Global
% of migrants (aged 0-19), 1990	3.0	0.4	2.0
% of migrants (aged 0-19), 2017	3.0	0.3	1.9
Refugees (per 1000), 2017	3.3	0.0	0.6

Notes: High skill emigration rate refers to the estimated annual emigration rate of the tertiary educated population (source: Deuster and Docquier, 2018); Urban growth rate is the average annual urban population growth rate between 2010 and 2015 (source: United Nations Population Division); Percentage of migrants refers to the share of migrants in the population aged 0-19 (source: United Nations Population Division); Refugees (per 1000) refers to the number of refugees for every 1000 members of the population (source: World Bank Development Indicators).