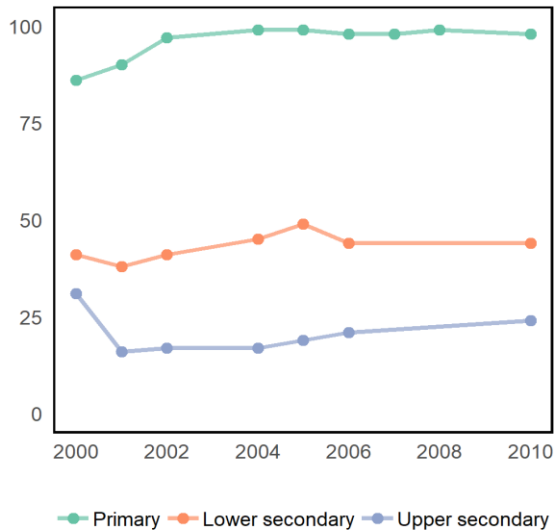


Latin America and the Caribbean

Nicaragua

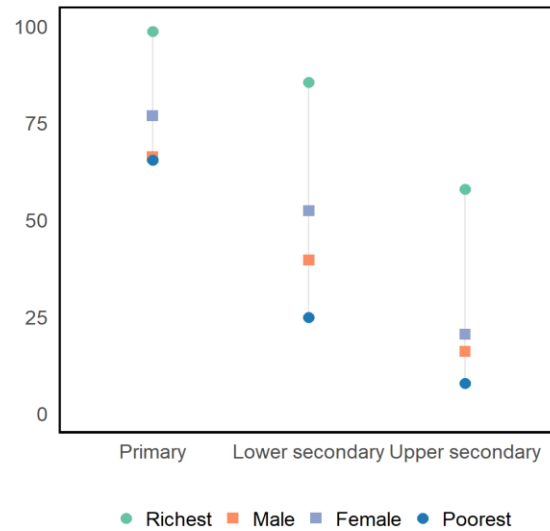
	Population (millions)	Students (millions)
Primary	1 ₊₁	...
Secondary	1 ₊₁	...

Adjusted net enrolment rate



Source: UIS database.

Completion rate, 2009



Source: UIS database and GEM Report team analysis.

INDICATORS BY SDG 4 TARGET (%)

	National	Regional	Global
Target 4.1 Basic education - Participation			
Out-of-school rate, primary	...	5 _i	9 _i
Overage rate, primary	...	7	9 _i
Completion rate, primary	...	91	85
Out-of-school rate, lower secondary	...	7 _i	16 _i
Overage rate, lower secondary	...	14	11 _i
Completion rate, lower secondary	...	81	73
Out-of-school rate, upper secondary	...	23 _i	36 _i
Completion rate, upper secondary	...	62	49
Transition rate into secondary	...	79 _i	76 _i

	Reading	Maths
Target 4.1 Basic education - Learning		
With minimum proficiency, early grades	63 ₋₄	45 ₋₄
With minimum proficiency, end primary	76 ₋₄	77 ₋₄
With minimum proficiency, end lower secondary
National assessment, early grades	Yes	Yes
National assessment, end primary	Yes	Yes
National assessment, end lower secondary	Yes	Yes

	National	Regional	Global
Target 4.2 Early childhood			
Pre-primary gross enrolment ratio	...	74 _i	50 _i
Participation rate, year before primary	...	95 _i	69 _i
Target 4.3 TVET and tertiary education			
Youth participation rate in TVET	...	6 _i	4 _i
Tertiary gross enrolment ratio	...	51 _i	38 _i
Target 4.4 Skills for work			
Adults who can copy and paste
Adults with secondary education	...	43	...
Target 4.6 Adult literacy and numeracy			
Youth literacy rate	...	98 ₋₁	91 ₋₁
Adult literacy rate	...	94 ₋₁	86 ₋₁

	National	Regional	Global
Target 4.7 Sustainable development / global citizenship			
With minimum proficiency, science
Target 4.a Learning environments			
Primary schools with water	...	83 _i	88 _i
Target 4.b Scholarships			
Outbound student mobility rate	...	2 _i	6
Target 4.c Teachers			
Trained teachers, primary	...	90 _i	92 _i
Trained teachers, secondary	...	77 _i	87 _i
Finance			
Education expenditure (%GDP)	4.3	5.1	4.4
Education expenditure (%budget)	17.9 ₋₁	18.0 _i	14.1

	National	Regional	Global
Target 4.5 Equity - gender, completion rate			
Female/male parity, primary	...	1.01 _i	1.01 _i
Poor females (%), primary	...	92 _i	76 _i
Female/male parity, lower secondary	...	1.09 _i	1.00 _i
Poor females (%), lower secondary	...	63 _i	72 _i
Female/male parity, upper secondary	...	1.11 _i	1.03 _i
Poor females (%), upper secondary	...	30 _i	33 _i

	National	Regional	Global
Target 4.5 Equity - location and wealth, completion rate			
Rural/urban parity, primary	...	0.95 _i	0.88 _i
Poor/rich parity, primary	...	0.92 _i	0.76 _i
Rural/urban parity, lower secondary	...	0.81 _i	0.86 _i
Poor/rich parity, lower secondary	...	0.62 _i	0.72 _i
Rural/urban parity, upper secondary	...	0.66 _i	0.68 _i
Poor/rich parity, upper secondary	...	0.35 _i	0.37 _i

Notes: (i) estimated value/UIS calculation; (-x): Difference between the observation from the reference year (2017). Indicator definitions are available at the UNESCO Institute for Statistics website and the 2019 Global Education Monitoring Report (Glossary and Introduction to the statistical tables). Data refer to 2017 or the most recently available year unless indicated otherwise.

Sources: UIS database for all indicators except those on targets 4.7 (TIMSS and PISA surveys of secondary students), and target 4.a (UNICEF). Regional aggregates are calculated by either UIS or the GEM Report Team (see above).

MIGRATION AND EDUCATION

	National	Regional	Global
High skill emigration rate, 1990	27.8	24.3	10.7
High skill emigration rate, 2010	20.5	16.5	10.1
Urban growth rate (2010-2015)	1.5	1.4	1.8

	National	Regional	Global
% of migrants (aged 0-19), 1990	0.9	1.0	2.0
% of migrants (aged 0-19), 2017	0.6	1.8	1.9
Refugees (per 1000), 2017	0.1	0.1	0.6

Notes: High skill emigration rate refers to the estimated annual emigration rate of the tertiary educated population (source: Deuster and Docquier, 2018); Urban growth rate is the average annual urban population growth rate between 2010 and 2015 (source: United Nations Population Division); Percentage of migrants refers to the share of migrants in the population aged 0-19 (source: United Nations Population Division); Refugees (per 1000) refers to the number of refugees for every 1000 members of the population (source: World Bank Development Indicators).